

Welcome to Year 5!



This afternoon we'll be discussing:

- Staff working in Year 5
- The new term and what the children will be learning about
- Weekly timetable
- Year group page on the website
- School Life app
- Homework
- Spellings
- PE & Forest School sessions
- Swimming
- Reading expectations
- Trips and Special Events (Academic Diary Dates)
- How you can best support your child's learning



Staff working in Year 5



Miss Winwood
Class Teacher
Computing Lead



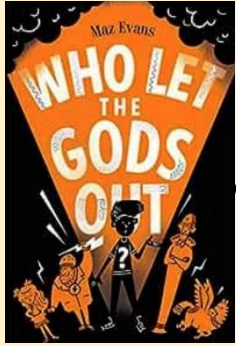
Mrs Pincher
Class Teacher
PSHE/RSE Lead



Mrs White
Support



Mrs Law
Support



Class Novel

Who Let The Gods Out



Maths

Place value
Addition and Subtraction
Multiplication and Division
Fractions



Science

The Human Body
(Biology)

English

Sentence and Grammar
structures



Geography
Mountains

Art

Style in Art

Year 5
Autumn Term 2023



Computing
Coding



Music
Livin' On A Prayer

French
Talking about
us/school
subjects



RE
Hinduism



History
Early British Empire

Our weekly timetable

	8.50 8:55	9.00 9:15	9:15 10:05	10:05 10:25	10:25 10:40	10:45 11:00	11:05 11:30	11:30 12:15	12.15 1.15	1.15 2.15	2.15 3.15	3.15 3.30
Mon	Registration	Handwriting	RE	Assembly	Break	Spelling	Reading	Geography	Lunch	English	Maths	Class Novel
Tues		Handwriting	Maths	Assembly		Spelling	Reading	English		History	Science	
Wed		Handwriting	Maths	Assembly		Spelling	Reading	English		Swimming Computing/Music		
Thurs		Handwriting	Maths	Assembly		Spelling	Reading	English		PE/Forest School PPA		
Fri		Handwriting	Maths	Assembly		Spelling	Reading	English		MFL	PSHE	Art

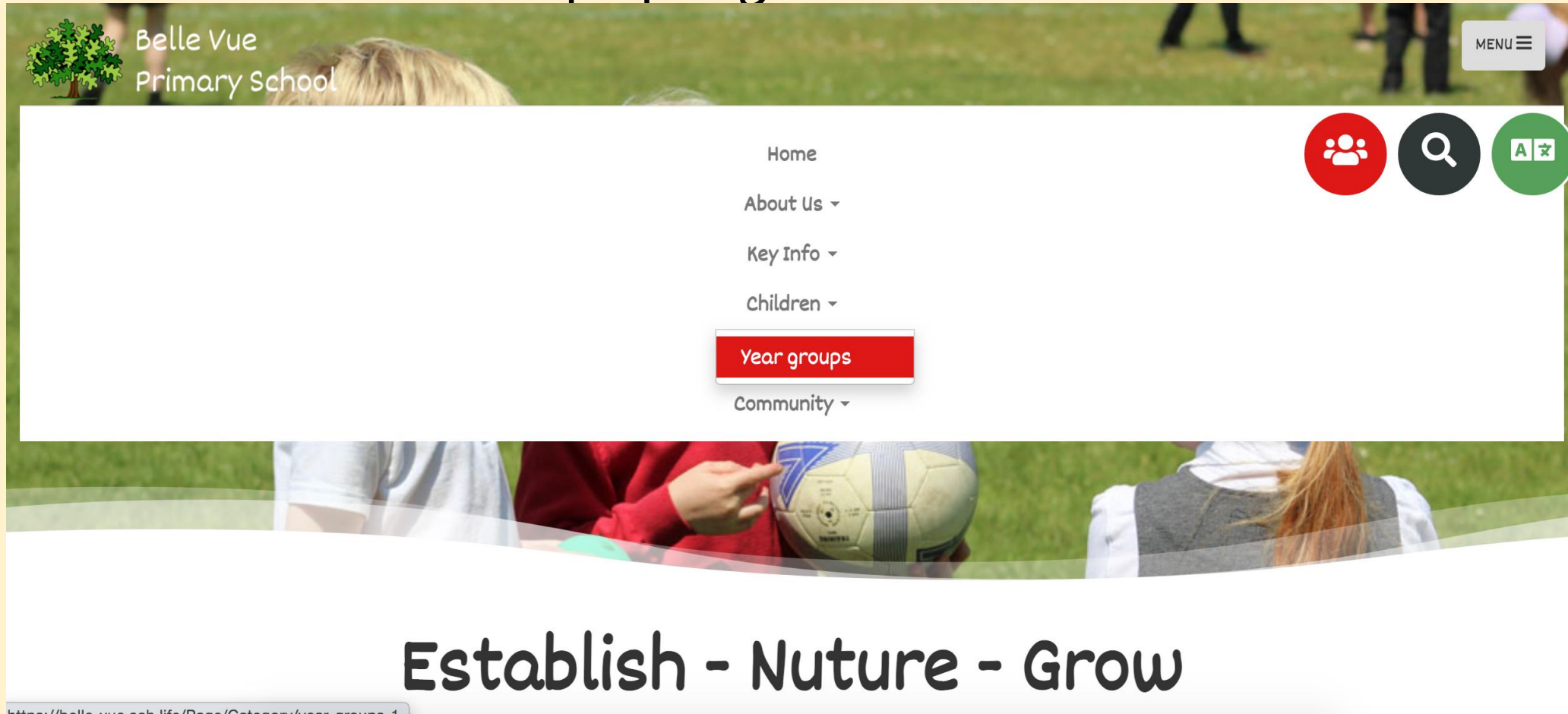


Communication Platforms

- Key messages for parents will be communicated by the school office via School Life App.
- Copies of letters are sent out to parents via emails and uploaded to the school website.
- Key dates are published on our website (Academic Diary Dates)
- Google Form links that can not be shared publicly for safeguarding reasons will be emailed to families.
- Newsletters will be issued every fortnight and available on the School Life app and uploaded to the website.



Year Group page on our website



The screenshot shows the top navigation bar of the Belle Vue Primary School website. The background is a photograph of children on a grassy field. In the top left corner, there is a tree icon and the text "Belle Vue Primary School". In the top right corner, there is a "MENU" button with a hamburger icon. Below the menu button, there are three circular icons: a red one with a group of people, a black one with a magnifying glass, and a green one with a language icon. The main navigation menu is centered and includes the following items: "Home", "About Us", "Key Info", "Children", "Year groups" (highlighted with a red background), and "Community".

Belle Vue Primary School

MENU

Home

About Us ▾

Key Info ▾

Children ▾

Year groups

Community ▾

Establish - Nurture - Grow

<https://belle-vue.sch.life/Desc/Category/year-groups-1>

Year Group page on our website



MENU



Children

Year groups



Year 5

Year Group page on our website



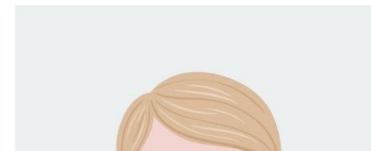
Children ▶ Year groups

MENU ☰



Welcome to Belle Vue's Year 5 Page!

Welcome to the Year 5 page, here you will find the latest updates, information about what we are learning and resources to support the learning of our children.



School Life App

- News/updates/information and reminders will be sent via School Life App
- All parents need to make sure they have obtain their log in details from the office, if you haven't already got them
- Parent Evening appointments will be booked via the School Life App
- Newsletters will be sent out via the School Life App
- Messages can be sent to individual parents/teachers via the School Life App. Please not that staff will only read/respond/send messages during their official working hours.



Assessment

- We are assessing your children all the time in various ways.
- Our questions and activities are planned to help us constantly assess whilst we are teaching.
- Children will sit termly NTS assessments in Maths, Reading and GaPS (Grammar, punctuation & spelling).
- Fluency assessments
- Multiple Choice Quizzes in Art, Geography, History and Science (results recorded)
- Writing is teacher assessed every half term



Homework

- Homework is set in accordance with our SMART homework policy.

Given out every Friday.

See year group page for links.



Our KS2 homework is

SMART!

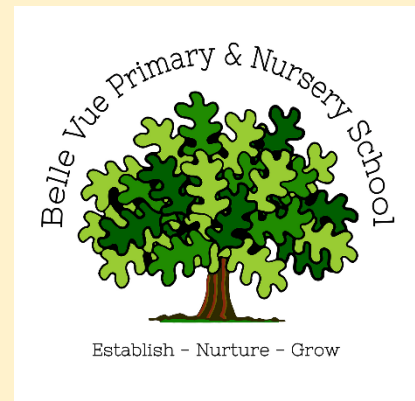
Spellings
Practise and learn your spellings. Can you spell them independently? Do you know what they mean? Can you include them in a sentence?

Multiplications & maths games
Learn your times tables so that you are fluent with them. Complete maths games on the internet (links are on the school website).

Additional tasks or activities
These tasks might not be every week but are set by your teacher to help you with your learning. They might involve reading, finding out about a topic or learning facts.

Readings
It is really important to practice your reading every day. Reading is the best thing to help you build your confidence and improve learning.

Termly tasks
Your teacher will set you 1/2 termly tasks to complete. It might be a practical project, fact file or something completely different.



Spellings

- Any statutory spelling lists and spelling word lists for a year group will be on year group pages.
- Spellings are taught phonetically, using phonemes and graphemes.
- Children are taught a phoneme and then each year group focuses on certain graphemes that represent that phoneme.
- On day 1, children are introduced to the phoneme/grapheme and learn how to spell a set amount of words that include that phoneme.
- Friday quiz.

Week	Phoneme	Spellings		
1	a	<u>acropolis</u> (top, city) a/cro/po/lis	<u>astronaut</u> (star, sailor) a/stro/naut	<u>astronomer</u> (star) a/stro/no/mer
		<u>asterisk</u> (star) a/ste/risk	<u>clarity</u> (clear) cla/ri/ty	<u>clarify</u> (clear) cla/ri/fy
		abandon a/ban/don	familiar fa/mil/iar	timbre tim/bre
		guarantee gua/ran/tee	<u>natural</u> (birth) na/tu/ral	<u>unfathomable</u> (not, able) un/fa/tho/ma/ble



Handwriting

- We use the handwriting scheme 'Letter Join'. Handwriting is taught daily and children have chance to practise the letters/joins.
- We expect children to use and implement the letters/joins they have learnt in handwriting, in their independent writing in all lessons.



Letter Join

Pupil Log-in:

Tablet log-in

User name: qr0470

Swipe code: A capital 'L' shape starting at top left.



PC log-in

User name: qr0470

Account Password: home

MDM log-in

If you are using an MDM system, please copy the following link: [MDM Login Link](#)

You can use the following file for the icon: [Icon Link](#)

Free Play for Pupils:

If you have changed the Class Names (see below), you can disable the Free Play option for pupils so they only choose a Class Name.

PE /Forest School sessions

- P.E and Forest School is currently on a Thursday afternoon.
- Children come to school wearing their PE kits or Forest School clothes to maximise learning time.
- For PE, hair needs to be tied back and earrings must be removed on the days children have PE (if they have not been removed then they must be taken out by the child themselves or covered with plasters).



Swimming

- Every other Wednesday (alternating between 5P and 5W).
- Children need to bring swimming kits into school.

Year 5 Swimming

Dear Parents and Carers,

From **Wednesday 13th September**, the new Year 5 children will start swimming lessons at The Duncan Edwards Leisure Centre in Dudley. The sessions will run every Wednesday and alternate between the two classes up until July. Please see below lesson dates for both classes.

5P	5W
<u>Autumn Term 2023</u>	
Wednesday 13 th September Wednesday 27 th September Wednesday 11 th October Wednesday 25 th October Wednesday 15 th November Wednesday 29 th November Wednesday 13 th December	Wednesday 20 th September Wednesday 4 th October Wednesday 18 th October Wednesday 8 th November Wednesday 22 nd November Wednesday 6 th December Wednesday 20 th December
<u>Spring Term 2024</u>	
Wednesday 10 th January Wednesday 24 th January Wednesday 7 th February Wednesday 28 th February Wednesday 13 th March	Wednesday 17 th January Wednesday 31 st January Wednesday 21 st February Wednesday 6 th March Wednesday 20 th March
<u>Summer Term 2024</u>	
Wednesday 24 th April Wednesday 1 st May Wednesday 15 th May Wednesday 5 th June Wednesday 19 th June Wednesday 3 rd July	Wednesday 17 th April Wednesday 8 th May Wednesday 22 nd May Wednesday 12 th June Wednesday 26 th June Wednesday 10 th July

Reading Expectations

- Children should be taking their reading book home every night and reading at home every day
- Even 10 minutes before bedtime will help children increase their range of vocabulary!

“The more you **read**
the more **things** you know.
The more that you **learn**
the more **places** you’ll go.”
-Dr. Seuss



Trips and Special Events

BLACK COUNTRY
LIVING
MUSEUM

History: Industrial Revolution



Science: Astronomy



Academic Diary Dates

Date	Event
Autumn Term 2023	Autumn Term 2023
Wednesday 6 th September	Reception Stay and Play and Year Group Introduction meeting for Parents
Tuesday 12 th September	Year 6 Introduction to Year Group and Residential Parent Meeting 3:00-4:00pm
Tuesday 19 th September	Introduction to Year Group Parent Meetings Year 3 2:45-3:00pm Year 2 3:05-3:20pm
Wednesday 20 th September	Introduction to Year Group Parent Meetings Year 1 2:45-3:00pm Year 4 3:05-3:20pm
Thursday 21 st September	Introduction to Year Group Parent Meetings Year 5 3:00-3:15pm
Wednesday 20 th September – Friday 22 nd Sept	Year 6 Residential Trip – Pioneer Centre
Friday 22 nd September	Jeans for Genes Day – no donations required
Tuesday 26 th September	School Photographs – from 8am
Wednesday 27 th September	SEND at Belle Vue parent presentation/meeting - invitation
Friday 29 th September	Macmillan Coffee Morning event – details to follow
Wednesday 4 th October	Nurture Parents: Introduction to Nurture 3:00-3:30pm
Friday 13th October	INSET DAY - School closed to Pupils
Tuesday 17 th October	Parents' Evening consultations
Thursday 19 th October	Parents' Evening consultations
Friday 20 th October	Foodbank Donations
Monday 23 rd October	Harvest Assembly

How you can best support your child's learning

- Reading before bed
- Daily times tables practise
- Spelling practise
- Handwriting practise
- Encouraging independence & resilience



Any questions?

- If you ever need a chat/ meeting, please contact us via the info@ email info@belle-vue.dudley.sch.uk
- If your email is regarding school administration, please telephone the office (01384 389900) or send an email to the office on info@belle-vue.dudley.sch.uk
- If you need a Designated Safeguarding Lead please contact the school office and ask to speak to Mrs Claire Davies (Deputy Head).

